



## 17 Newtown Lane – East Hampton

Between Main Street & Park Place

Description	Area (approx.)	Comments	For Further Information Contact Exclusive Leasing Agent:
Second Floor Retail or Office Space	Second Floor: 1,815 sq. ft.  <b>Asking Rent</b> \$6,000 per month NNN  <b>Additional charges</b> \$450 per month (approx.)  <b>Possession</b> Immediate	Prime location in East Hampton near the corner of Main Street. This two-story commercial building constructed in 1917 was the original Fire Station in East Hampton.  Private entrance on Newtown Lane with stair to second floor.  Neighbors include Brunello Cucinelli, Tory Burch, Scoop Beach, John Varvatos, James Perse, Calypso, Catherine Malandrino, Elie Tahari,, Theory and the popular restaurants Cittanuova and Sam's.	Joel E. Isaacs 212 966 5500 x 3890 joel@isaacsandcompany.com



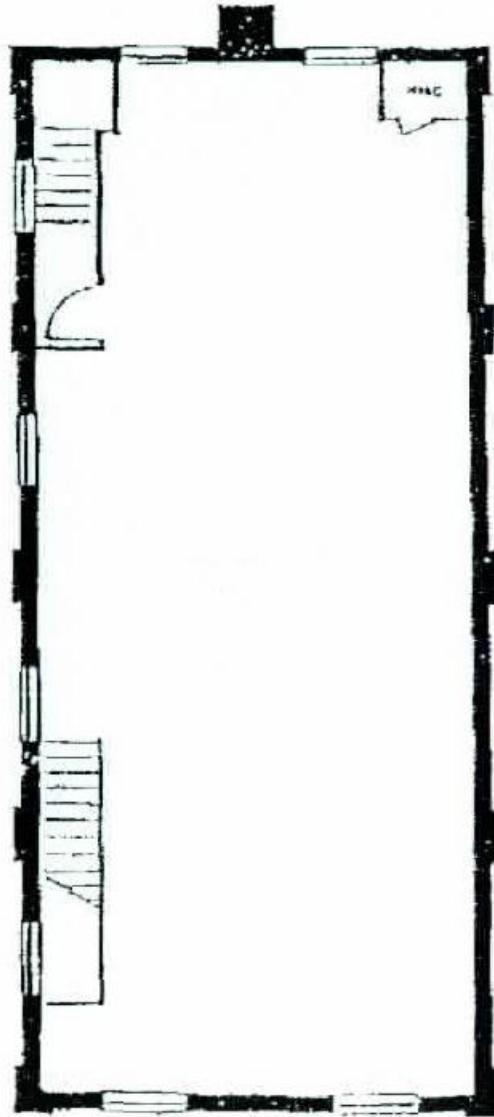
INTERIOR PHOTOS – SECOND FLOOR

## 17 Newtown Lane

East Hampton, New York

**For Further Information Contact  
Exclusive Leasing Agent:**

Joel E. Isaacs  
212 966 5500 x 3890  
[joel@isaacsandcompany.com](mailto:joel@isaacsandcompany.com)



Second Floor Plan

## 17 Newtown Lane

East Hampton, New York

**For Further Information Contact  
Exclusive Leasing Agent:**

Joel E. Isaacs  
212 966 5500 x 3890  
[joel@isaacsandcompany.com](mailto:joel@isaacsandcompany.com)

N E W T O W N  L A N E	Lilly Pulitzer	55	60 58 56 54 52 48-50 46  40 38 36 34 32 26 20 16 14 6 2	
	OSA			
	Scoop Beach Men	51		
	Scoop	49		
	Tory Burch	47		
	Second Nature	41		
	Brunello Cucinelli	39		
	Entre Nous	37		
	Scoop Du Jour	35		
	LF Stores			
	Cittanuova	29		
	Catherine Malandrino	25		
	Calypso	21		
	A Little of What You Fancy	19		
	Calypso Home	17		
	Steph's Stuff	13		
	The Monogram Shop	7		
	Elie Tahari	1 Main Street		
	Barnes Lane			
	North Fork Bank			
Glenn MacWhinnie Books				
Sam's Restaurant				
The Golden Pear				
Village Hardware				
Eileen Fisher				
Madewell				
Henry Lehr				
Bank of America				
Bernard Goldberg Gallery				
Cole Haan				
Main Street				

## 17 Newtown Lane

East Hampton, New York

**For Further Information Contact  
Exclusive Leasing Agent:**

Joel E. Isaacs  
212 966 5500 x 3890  
joel@isaacsandcompany.com