

SOHO LIVE/WORK CO-OP

EXCLUSIVE LISTING
561 BROADWAY

isaacs and company

commercial real estate



561 BROADWAY

“The Singer Building” also called “The Little Singer Building” was designed in 1902 by the Brooklyn born architect Ernest Flagg. Being trained in Paris, he was famous for his Beaux-Arts style, and the building uses a mix of glass, cast iron and brick with distinctive elements such as the Juliet balconies and ornamental brickwork on the facade.

This is an AIR building - waiver for AIR status. 16 units over 12 floors with a mix of residential, commercial, and live/work.

Prime location in core SoHo. Within walking distance to the



SUITE 4A

AREA (approx.) 3,175 SF

CEILING HEIGHT (approx.) 10' 5"

SALE PRICE Upon request

MONTHLY MAINTENANCE \$6,299.40 /mo

- COMMENTS**
- Floor to ceiling windows overlooking Broadway
 - Bathrooms and kitchen in place

SUITE 4B

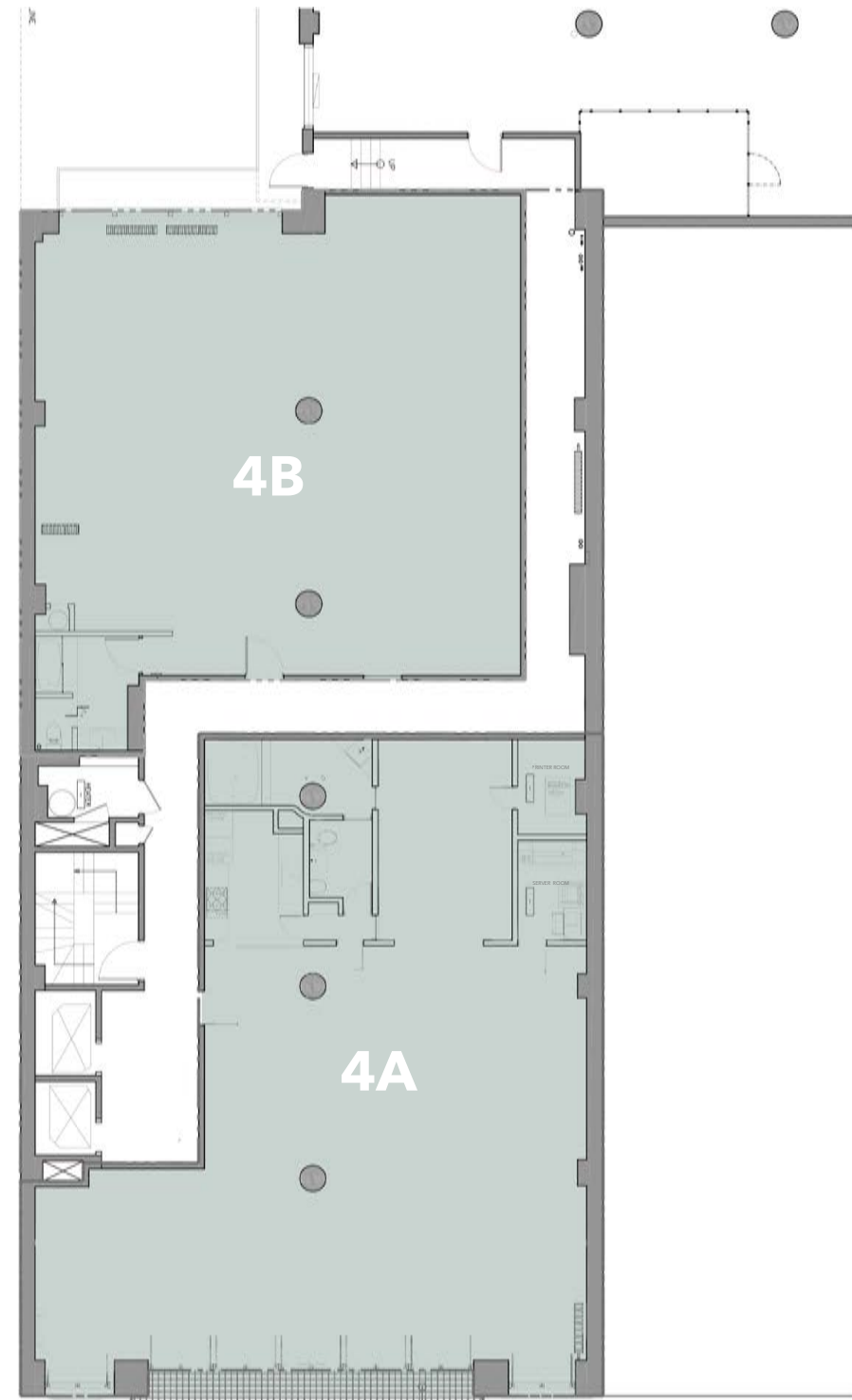
AREA (approx.) 2,485 SF

CEILING HEIGHT (approx.) 10' 5"

SALE PRICE Upon request

MONTHLY MAINTENANCE \$4,199.60 /mo

- COMMENTS**
- Open loft space plumbed for bathroom and kitchen



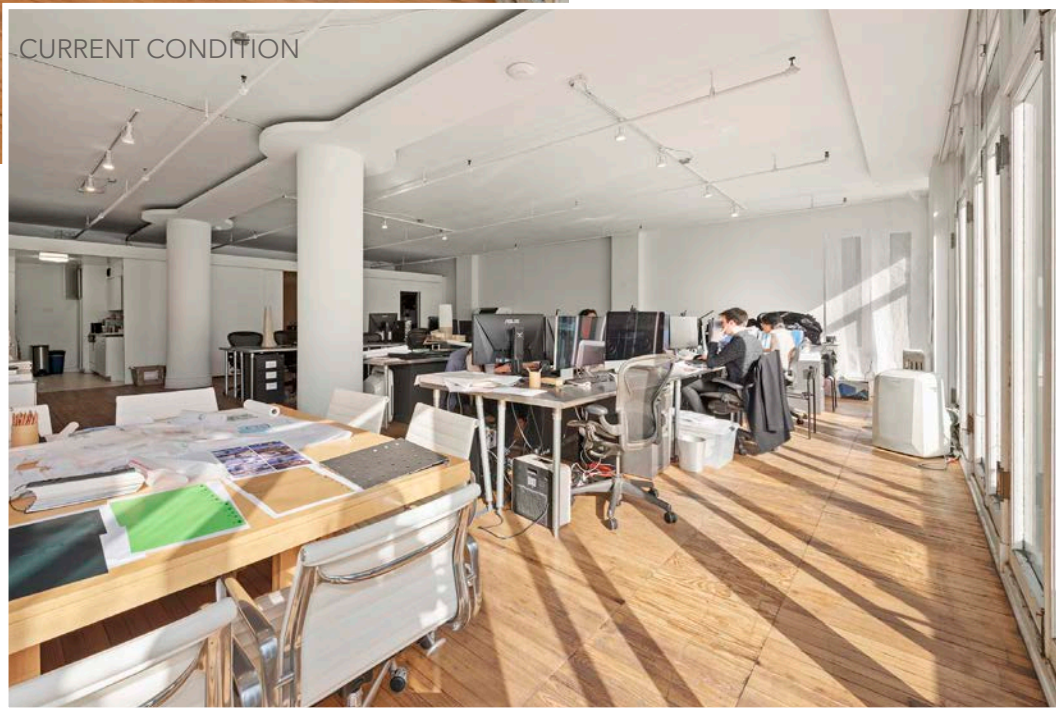
BROADWAY

561 BROADWAY

SUITE 4A



ILLUSTRATION



561 BROADWAY

SUITE 4A



ILLUSTRATIONS

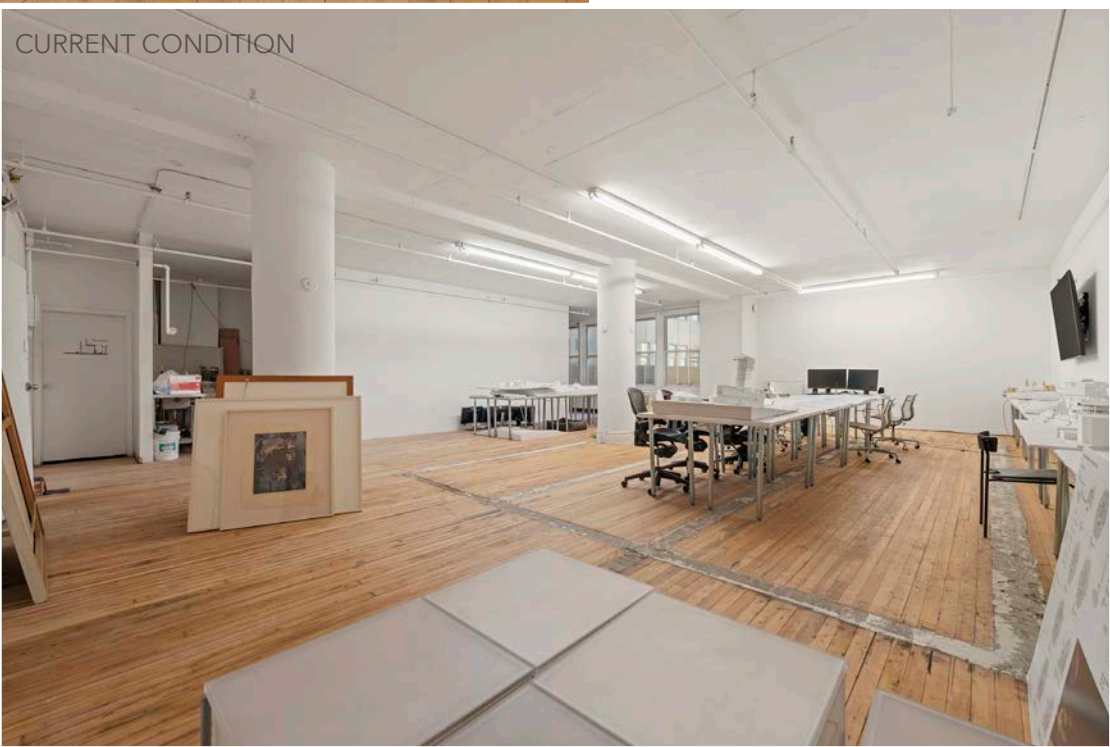


561 BROADWAY

SUITE 4B



ILLUSTRATION



CURRENT CONDITION

561 BROADWAY

4th FLOOR

For more information contact
exclusive selling agents:

Joel Isaacs
646-710-3890
joel@isaacsandcompany.com

Nick Cowan
646 710 3897
nick@isaacsandcompany.com

