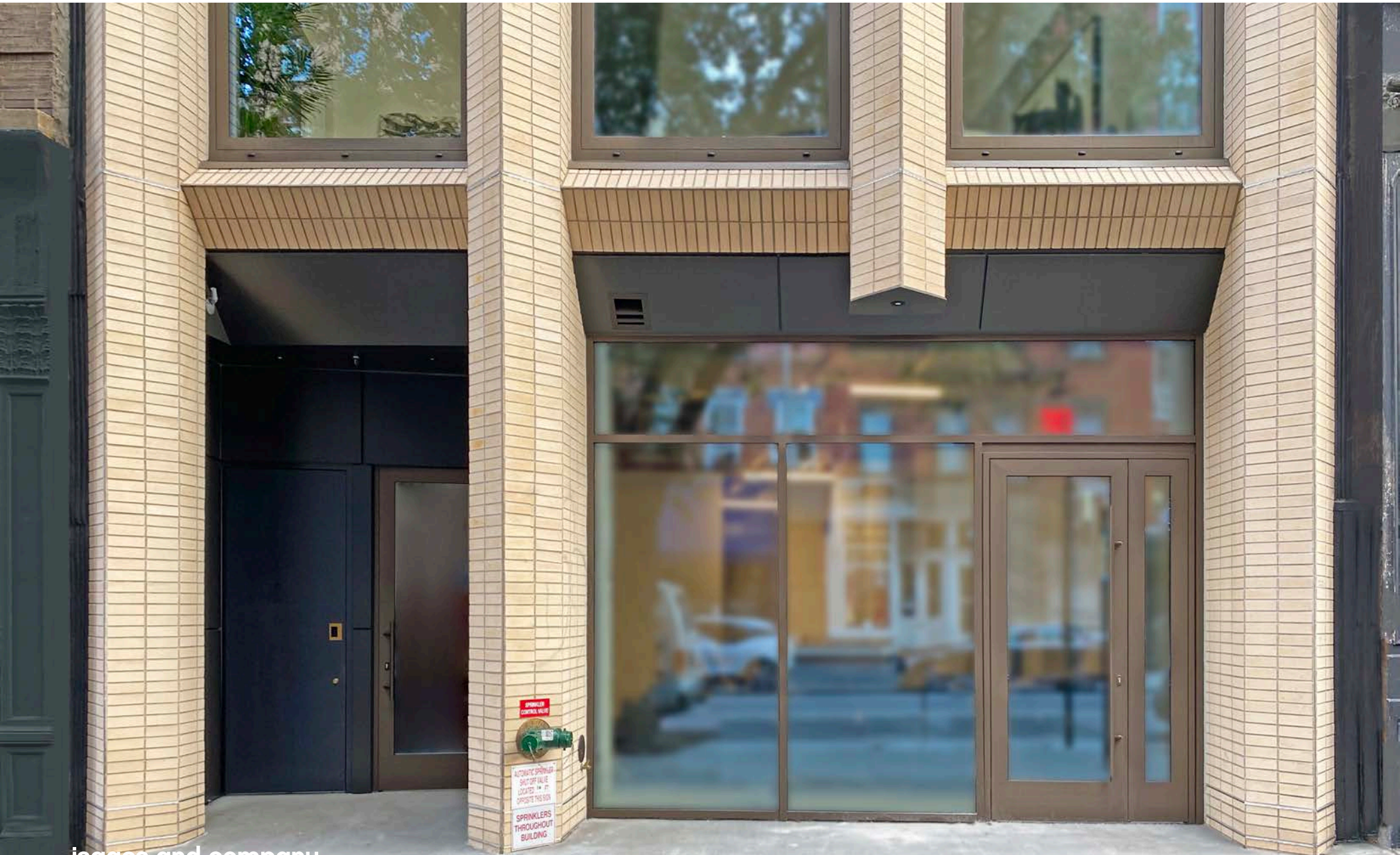


EXCLUSIVE LISTING

378 BROOME STREET



378 BROOME STREET

LOCATION Between Mulberry & Mott Streets

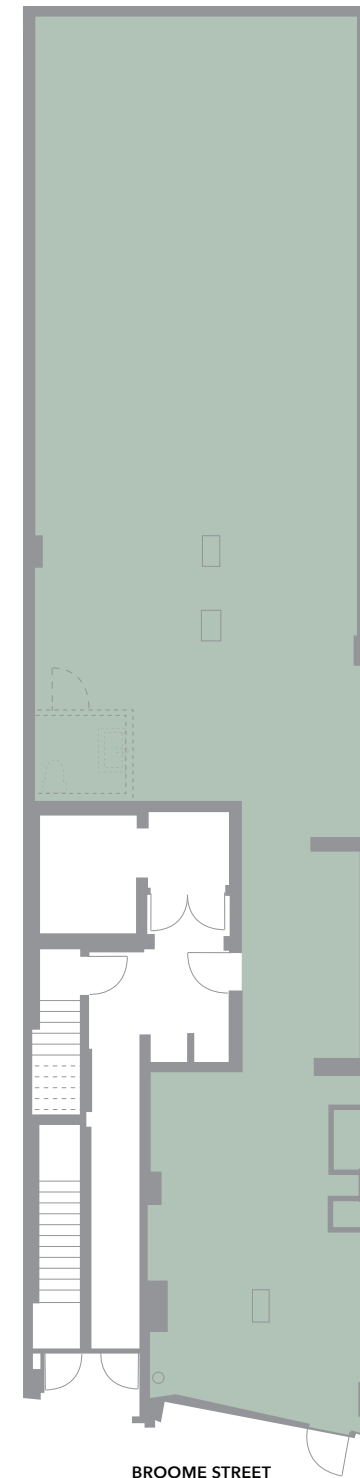
AREA (approx.) Ground 1,995 SF

FRONTAGE 14'

CEILING HEIGHT 12' 6"

POSSESSION Immediate

- COMMENTS**
- Brand new, move-in ready retail space in the heart of Nolita
 - Large glass façade and available street signage create an excellent branding opportunity
 - Located in the base of a new luxury condo development on a high traffic block
 - Perfect for a fashion, restaurant, or gallery tenant
 - Steps from Eataly's new 18,000 SF SoHo location
 - Close proximity to the **6 N Q R W J**



378 BROOME STREET

FOR MORE INFORMATION CONTACT
EXCLUSIVE LEASING AGENTS

Jeremy Aidan

646 696 0010

jeremy@isaacsandcompany.com

Harry O'Donnell

646 710 3887

harry@isaacsandcompany.com

Victor Terzi

646 574 3688

victor@isaacsandcompany.com

isaacs and company
commercial real estate

