

EXCLUSIVE LISTING
159 BOWERY



159 BOWERY

LOCATION

Between Kenmare and Broome Streets

AREA

Ground Floor + Cellar	1,750 SF 1,500 SF
Second Floor + Outdoor Patio	1,300 SF 300 SF
Third Floor + Private Roof Deck	1,300 SF 1,100 SF

FRONTAGE

23'-25'

CEILING HEIGHTS

Ground Floor	11'2"
Second Floor	8'6"
Third Floor	12'6"

POSSESSION

Immediate

COMMENTS

- Brand new modern development with high end finishes.
- Rare opportunity to lease an entire building totaling up to 5,840 SF.
- Building can be leased separately or together.
- All glass storefront promoting large amounts of natural light on Bowery's hottest stretch.
- Steps from the Grand Street subway station servicing over 7 million annual riders and the Bowery subway station.
- Average household income of over \$100,000.
- In close proximity to Essex Crossing with 1.8 million SF of mixed-use retail, residential and commercial space.
- Neighborhood tenants include, Supreme, Sel Rose, Wayan, The Moxy Hotel, Citizen M, et al.
- All uses considered.

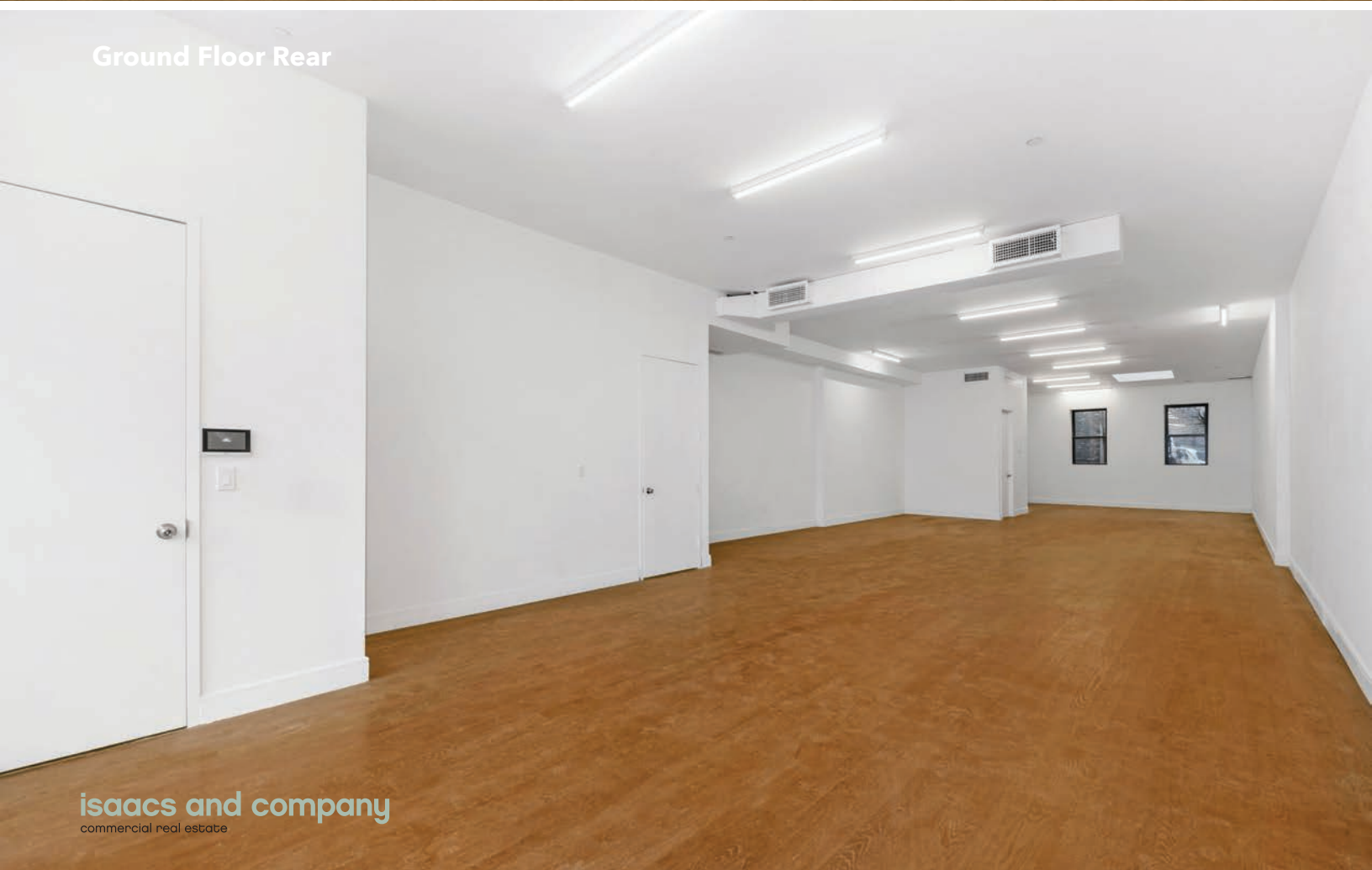


159 BOWERY

Ground Floor Front



Ground Floor Rear



159 BOWERY

Second Floor Front



159 BOWERY

Second Floor Outdoor Patio



159 BOWERY

Private Roof Deck



Third Floor Front



159 BOWERY

FOR MORE INFORMATION CONTACT EXCLUSIVE LEASING AGENTS

Jeremy Aidan

646 696 0010

jeremy@isaacsandcompany.com

Harry O'Donnell

646 710 3887

harry@isaacsandcompany.com

Victor Terzi

646 710 3895

victor@isaacsandcompany.com

isaacs and company
commercial real estate

REBNY
REAL ESTATE BOARD OF NEW YORK

Although the information regarding property sale, rental or financing is from sources deemed reliable, such information has not been verified and no express representation is made nor is any to be implied as to the accuracy hereof, and it is submitted subject to errors, omissions, change of price, rental or other conditions, prior sale, lease or financing or withdrawal without notice.