

EXCLUSIVE LISTING

22 Little West 12th Street

22 Little West 12th Street

Between Washington Street & Ninth Avenue



22 Little West 12th Street

Property Highlights



- Fully built, open layout retail space in the heart of Meatpacking District
- Floor-to-ceiling windows and expansive frontage create an incredible branding opportunity
- Extremely high traffic block with over 1 million annual visitors
- Highly visible, LPC-approved billboard signage overlooking the High Line is included
- Surrounded by luxury fashion, F&B, cultural, and hotel tenants
- Divisions considered

— Average Household Income —

\$204,020

0.25 Miles

\$200,655

0.5 Miles

\$208,875

0.75 Miles

— 2023 Total Daytime Population —

18,079

0.25 Miles

56,628

0.5 Miles

141,910

0.75 Miles

22 Little West 12th Street

3,700 SF

— GROUND FLOOR —
(DIVISIBLE)

14'7"

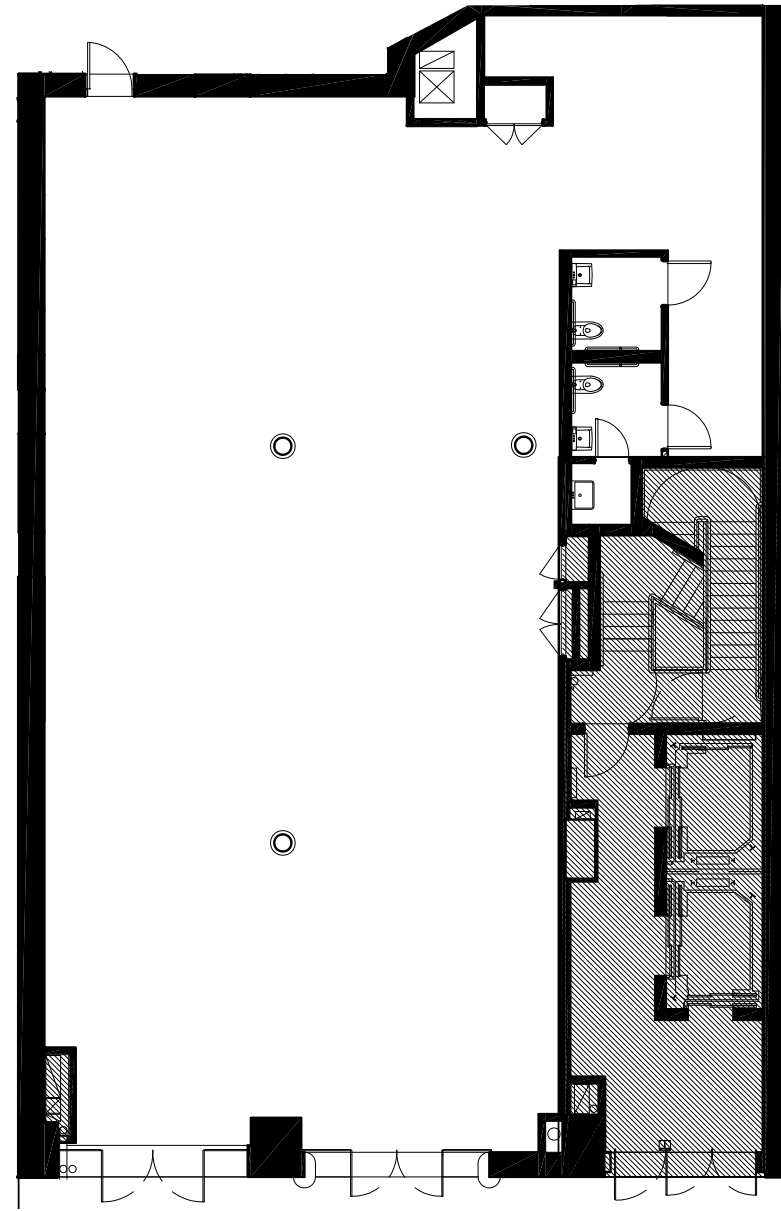
— CEILING HEIGHT —

35'

— FRONTAGE —

IMMEDIATE

— POSSESSION —



LITTLE WEST 12TH STREET

22 Little West 12th Street



22 Little West 12th Street



22 Little West 12th Street

Neighbors

THE STANDARD



LORO PIANA



RESTORATION HARDWARE



SAINT LAURENT



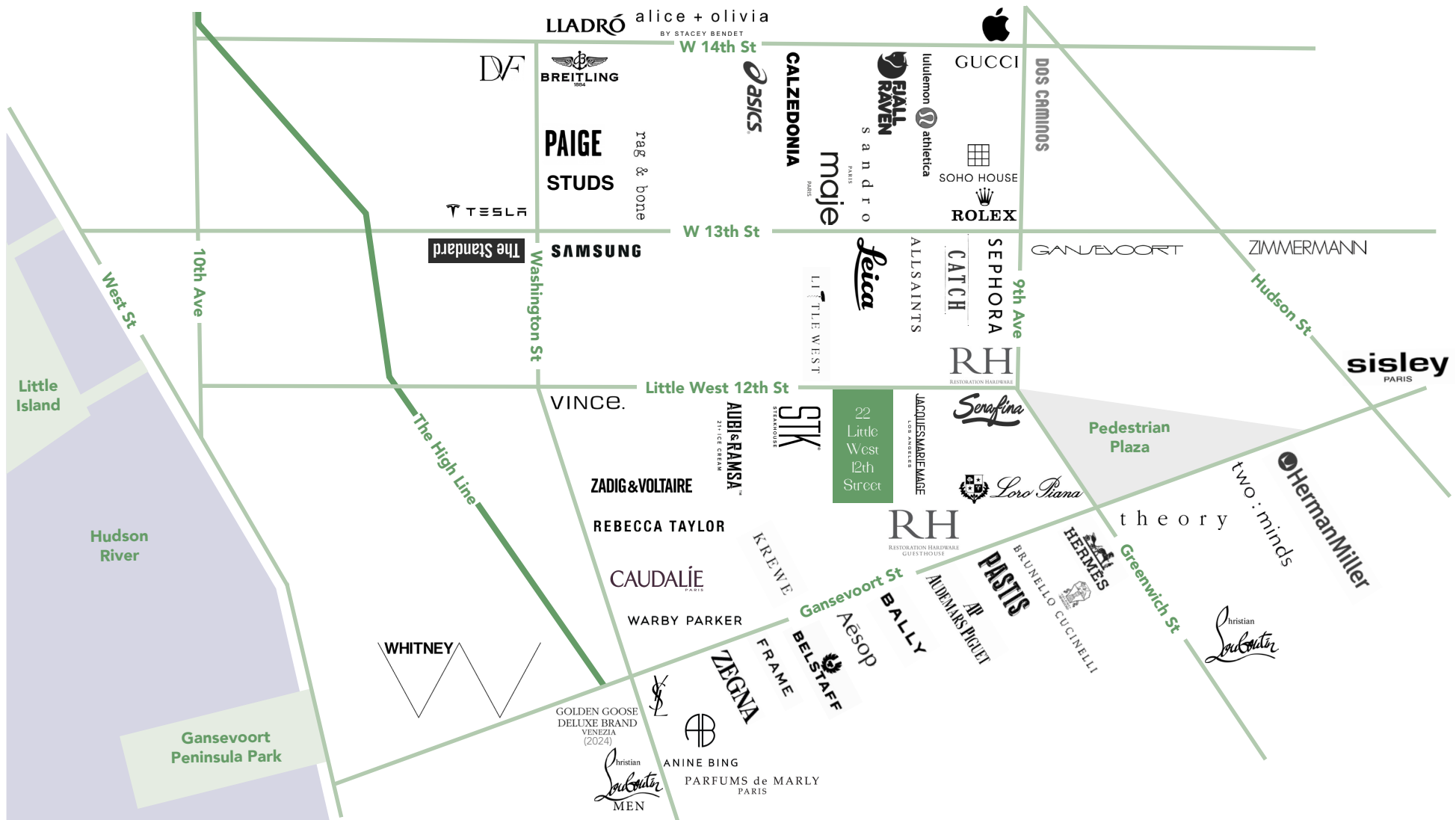
HERMÈS



THE WHITNEY



22 Little West 12th Street



Contact Exclusive Leasing Agents

Joel Isaacs

646 710 3890

joel@isaacsandcompany.com

Jeremy Aidan

646 696 0010

jeremy@isaacsandcompany.com

Harry O'Donnell

646 710 3895

harry@isaacsandcompany.com

