

338 WEST 4TH STREET

AKA 51 EIGHTH AVENUE



338 WEST 4TH STREET

AKA 51 EIGHTH AVENUE

LOCATION Corner of Horatio Street

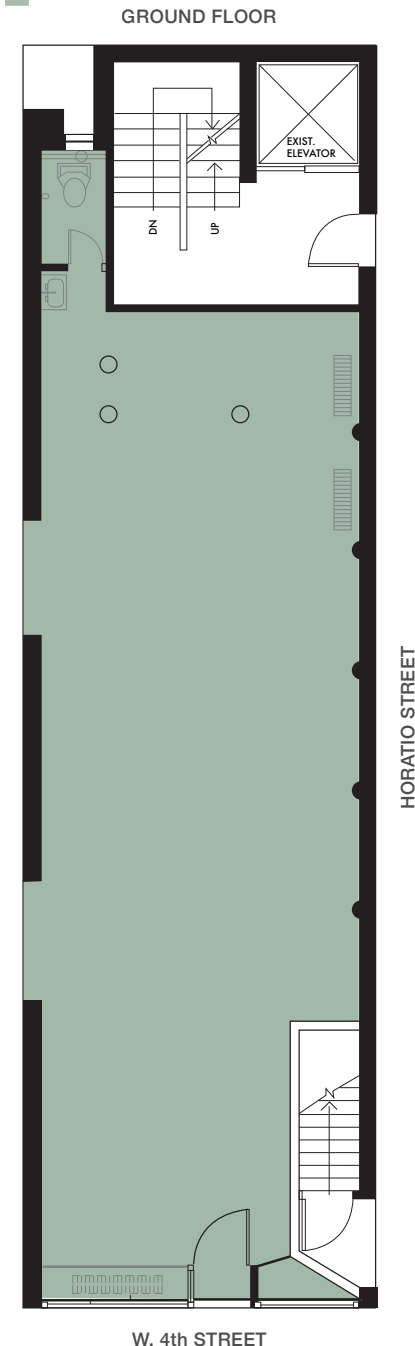
AREA (approx.) Ground Floor 1,250 SF
Basement storage available

POSSESSION July 1, 2024

FRONTAGE 20' on W. 4th Street
70' on Horatio Street

CEILING HEIGHT 11' 6"

- COMMENTS**
- Strategically located at the intersection of the West Village, Chelsea, and the Meatpacking District
 - Neighbors include Gelateria Gentile, Aux Merveilleux de Fred, Acne Studios, PlantShed, and Fellow Barber
 - Open space with high ceiling, exposed brick, and hardwood floors
 - Dry use only



338 WEST 4TH STREET AKA 51 EIGHTH AVENUE



Rendering of possible façade

338 WEST 4TH STREET AKA 51 EIGHTH AVENUE



338 WEST 4TH STREET AKA 51 EIGHTH AVENUE

Contact Exclusive
Leasing Agents:

Joel Isaacs

646 710 3890

joel@isaacsandcompany.com

Nick Cowan

646 710 3897

nick@isaacsandcompany.com

isaacs and company
commercial real estate

REBNY Although the information regarding property sale, rental or financing is from sources deemed reliable, such information has not been verified and no express representation is made nor is any to be implied as to the accuracy hereof, and it is submitted subject to errors, omissions, change of price, rental or other conditions, prior sale, lease or financing or withdrawal without notice.

